

Belgica Theater

technical rider

Main theater:

Address main entrance: Kerkstraat 24, 9200 Dendermonde – Belgium

Address backstage: Noordlaan (Parking “Kazerne”), 9200 Dendermonde – Belgium

Important note:

If you come with a big truck or trailer, please let us know!!! IMPORTANT!!!

If you come with a Volkswagen,...well... that's ok I guess...



The foyer:

The foyer is provided with a ticketing booth, toilets, cloakroom, a cafe and a place for merchandising
There is a free WIFI hotspot.

Note:

We can provide staff for the cloakroom. Please contact rental-administration
(+32 52 20 26 26)

The hall:

The hall is suitable for theater, concerts, cinema, conferences, ...but no underground rave parties

Dimensions hall: 12m x 23m

Dimensions balcony: 12m x 8m

Seats: 300 numbered seats on groundlevel, 100 numbered seats on the balcony

Pitches: none

Wheelchairs: Max 5 (we remove 1 seat per wheelchair – please let us know in advance)

Additional

The hall is equipped with an induction loop (on request)

There are 90 cushions for children

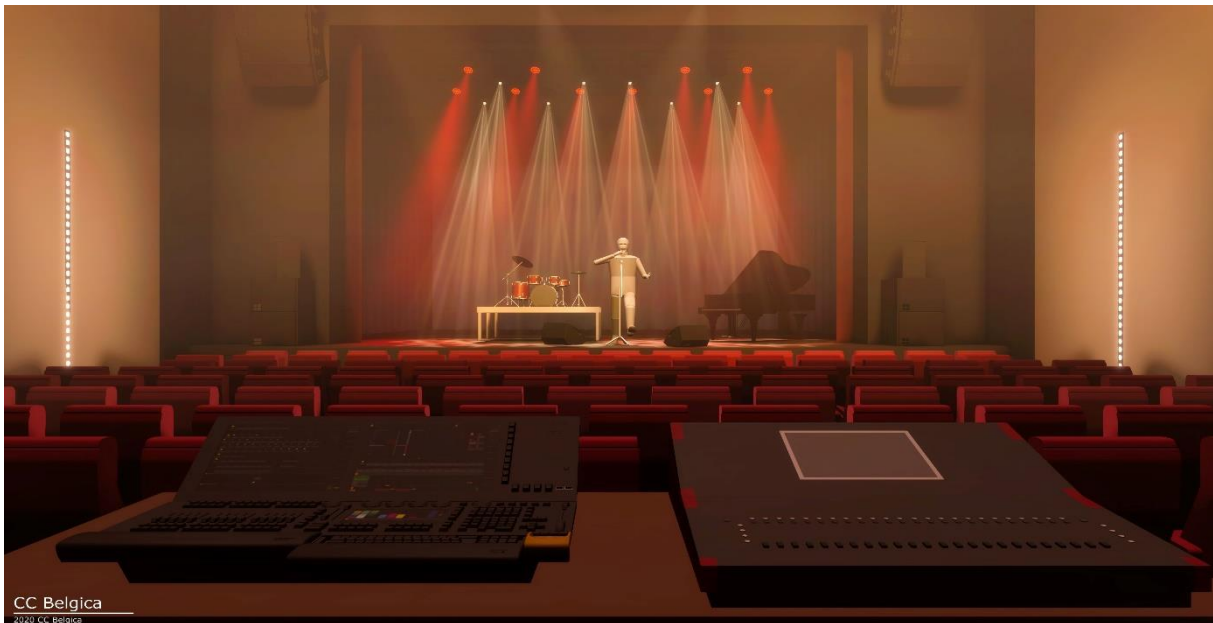
Belgica Theater

technical rider

The control booth:

The hall is provided with a fixed control booth, located midway of the hall

Dimensions:	3m x 1,8m
DMX:	1 DMX line, Artnet with 4 intergalactic universes
Data:	3x Cat5 (2 heading stage right/Jardin, 1 heading stage left /Cour)
Audio:	32 analog inputs / 8 sends
Com:	1 ASL headset
Hall lights:	DMX address RGB LED fixtures on 505/506/507 wall and 508/509/510 ceiling The control booth has separate electrical supplies for sound and light
Catering:	Nope, not here...but if you like to spill cola on your OWN desk, please feel free.



Belgica Theater

technical rider

The stage:

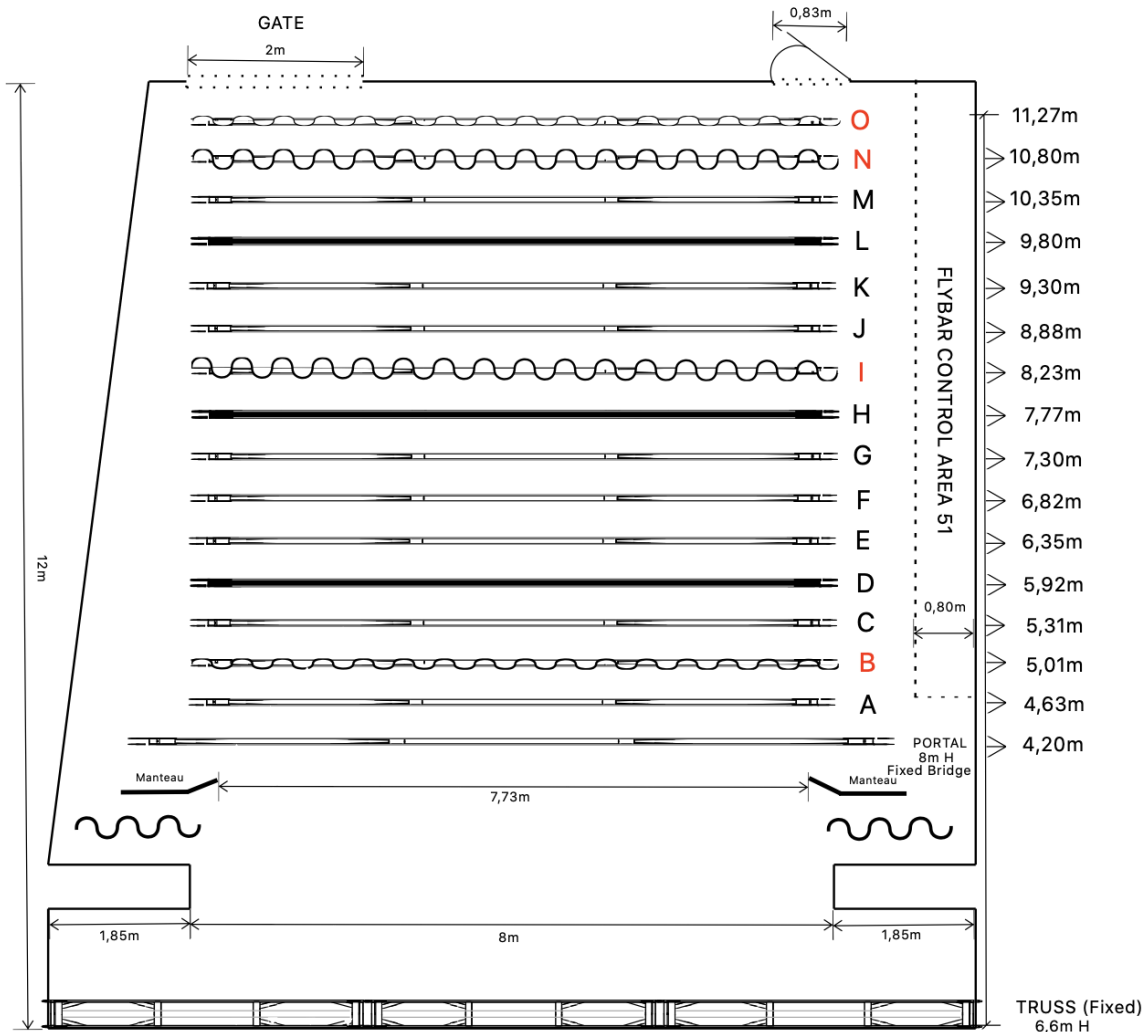
- Floor: Black painted floor plates. It is forbidden to screw into the floor (you don't want to get in trouble with the technicians....trust me on this)
- Fire screen: The placing of fixed decor elements under the fire screen is not allowed
Please contact our friendliest technician to find a solution
- Theater tower:
- Height 14m. riggingpoints to be viewed on site with our adventurous technician
 - 3 electrical flybars provided with 10/8/10 lightcircuits 16A CEE 2,5Kw
Max load 250kg and 80kg point load
 - 15 manual flybars max load 250kg and 80kg point load
 - 1 fixed portal bridge height 8m provided with 12 lightcircuits 16A CEE 2,5Kw and 1 lightcircuit 5Kw
 - 2 fixed side bridges height 8m provided with 4 lightcircuits 16A CEE 2,5Kw
 - 2 light towers on the side (our French friends call it the "manteau") provided with 5 lightcircuits 16A CEE 2,5Kw
 - 1 fixed truss at the position of the pre-scene height 6,6m provided with 8 lightcircuits 16A CEE 2,5Kw
This fixed truss is not suitable for rigging
 - 1 front bridge with 12 lightcircuits 16A CEE 2,5Kw and 2 lightcircuits 5Kw
 - 1 fixed projection screen on flybar (B)
 - 1 fixed projection screen on flybar (O)
 - 1 fixed background black curtain on rails on flybar (I)
 - Fixed???....yep...F.I.X.E.D.



Belgica Theater

technical rider

CC Belgica Stageplan



- D: Electric 10 dimmers
- H: Electric 8 dimmers
- L: Electric 10 dimmers
- Manteau: Each 5 dimmers
- Portal bridge: 20 dimmers
- Fixed truss pre scene 8 dimmers
- Front bridge 14 dimmers
- Floor 8 dimmers

- B: Fixed filmscreen
- I: Fixed background curtain 1
- N: Fixed background curtain 2
- O: Fixed white background

ALL FLYBARS MAX 250KG

Belgica Theater

technical rider

Note:

If you want to do some arty farty things like a real flying elephant....we need to talk...seriously, so don't hesitate to contact our bravest technician to find a creative solution.

Extras:

Manlift	-JLG 20MVL max working height 7m	1x
Floor vinyl	-Black (on request – 72h in advance)	
Stage decks	-2m x 1m, height: 20, 40, 60, 80 and 100cm	15x
Pupiters:	-Black	12x
Pulpit:	-Black	1x
Armless chairs:	-Grey	60x
Piano stool:	-Black with ONE scratch on it	1x
Drum stool:	-Silver	1x

Electrical supplies:

- 1 x 125A 400V split 2 x 63A
- 1 x 63A 400V sound
- 1 x 32A 400V sound
- 1 x 16A 400V sound
- 1 x 20A 400V for in house amplifiers
- ...and few used AA batteries....



Belgica Theater

technical rider

Sound:

FOH:	-Line array d&b Q1	2x4
	-Infill d&b Q10	2x
	-Center d&b Qj10	1x
	-Sub d&b Y-series	2x2
	-Delays d&b E3 (Balcony/under balcony)	2x2
Amps:	-d&b 10D	2x
	-d&b 40D	1x
Console FOH:	-Digico SD9 Stealth Core2 with D2 rack	
Console MON:	-Digico SD8 Stealth Core2 with D2 rack (on request/if possible)	
Monitors:	-d&b MAX15 coaxial	10x
	-DB Audio 15inch active speakers	4x
Microphones:	Audio Technica	
	-ATM PRO35	2x
	Audix	
	-D6	2x
	-D2	2x
	-D4	1x
	-i5	1x
	-ADX51	2x
	Sennheiser	
	-MD421	4x
	-MD441U	2x
	-E606	2x
	-BF531	1x
	-BF504	4x

Belgica Theater

technical rider

AKG

-C391b	5x
-D112	1x
-C1000	4x
-C3000	2x
-C535	2x
-C419	6x

ELECTRO VOICE

-re20	2x
-------	----

DPA

-4088HS	4x
-4099clip	4x

Crown

-PCC160	2x
---------	----

Shure

-SM58	6x
-SM58B	3x
-SM58BW qlxd1	3x
-SM87A	1x
-SM87AW qlxd1	1x
-SM57	6x
-SM57B	2x
-SM91	2x
-B52	1x

Neumann

-KM184	4x
-KMS105MT	1x

Belgica Theater

technical rider

DI's:	-BSS AR133 active	8x	
	-RADIAL pro2 stereo	4x	
Transmitter:	-Shure QLXD1 belt set1	4x	freq range 534-598Mhz
	-Shure QLXD2 B58A set1	3x	freq range 534-598Mhz
	-Shure QLXD2 B87A set1	1X	freq range 534-598Mhz
	-Shure QLXD2 B58A set2	1x	freq range 470-534Mhz
Receiver set1:	-Shure QLXD4	4x	freq range 534-598Mhz
Receiver set2:	-Shure QLXD4	1x	freq range 470-534Mhz

Regulations for wireless applications:

In Belgium there are two free channels:

- Channel 27: 518MHz – 526MHz transmission power max 50mW
- Channel 29: 534MHz – 542MHz transmission power max 50mW

Also allowed:

- Bandwidth 1795MHz – 1800MHz transmission power max 10mW
- ISM bandwidth 863MHz - 865MHz transmission power max 10mW

Regulations for sound pressure levels:

- Max sound pressure level: 95dB(A) Laeq during 15min
- Max sound pressure level: 102dB(A) Laeq during 60min **ONLY WITH AUTHORIZATION!!!**

Note1: If you need an authorization. Please contact the rental administration at least 8 weeks before your event (+32 52 20 26 26)

!!! The sound pressure levels in the hall are measured and recorded by a 10Easy system !!!

Note2: We keep the recorded files in case you have blown up someones ears. If you need special sound requirements, please contact the smartest technician. He will probably say “nope”, but you never know...maybe it's your lucky day.

Belgica Theater

technical rider

Light:

Dimmers:	-ADB Eurodim2 2.5Kw	81Ch
	-ADB Memopack 2.5Kw	12Ch
	-Lightbrick 1Kw/CH	4x4Ch x 6
DMX:	-Node: BriteQ BT28 Artnet	1x
	-Splitter: BriteQ	4x
Console:	-GrandMA3 Light	1x
Conventional light:		
Fixed in front bridge:	-ADB Zoom Profile DN204 2Kw	4x
	-ADB PC C203 2Kw	10x
On stage:	-ADB Zoom Profile DW104 1Kw	6x
	-ADB Zoom Profile DW105 1Kw	2x
	-ADB Zoom Profile DS104 1Kw	2x
	-ADB Zoom Warp 0,8Kw	3x
	-ADB PC C103 1Kw	27x
	-ADB Fresnel F101 1Kw	8x
	-ADB ACP 3x1Kw	5x
	-ADB ACP 1Kw	7x
	-Showtec sunstrip passive	6x
	-Par 64 1kw	30x
		These are modular to cp60/61/62
Moving heads/LED:	-Chauvet cyc1	8x
	-Robe300 Led Wash	6x
	-Robe150 Led beam	8x
	-Robe T1 profile	8x
	-BriteQ smartzoom Led par	8x
	-IMG Stageline RGB sunstrip	6x
Extras:		
Blacklight:	-TL	4x
Following spot:	-ADB 1200	1x
Hazer:	-Diffusion DF50	1x

Belgica Theater

technical rider

Tripods:	-Tripod silver	8x
	-floor support light	12x
	-Wind up black Manfrotto 3m	4x
	-Lighting tower black	8x

Note: If you need special light requirements, please contact the technician with the Hawaiian shirt. He likes "special".



Video:

Video processor:	-Extron IN1608	1x fixed in control room
Beamer:	-Christie D12wu-H DLP 11,8AnLu	1x fixed in hall
Shutter:	-dmx controllable or on/off switch	1x
Screen:	-Fixed projection screen	2x

Belgica Theater

technical rider

There are 2 access points for projection (HDMI or VGA): control room and control boot. (it's a work in progress)

!!! please take your own adapters with you (Mac, Ficher Price, Lego, whatever ...)

Note:

Well....who doesn't hate video...

If you need special video requirements, please contact our most patient technician.....Good luck!

Belgica Theater

technical rider

Contact the technicians:

- Steven Roels: The godfather of tech. Special needs? Call him!
Mail: steven.roels@dendermonde.be
Phone: 0032 (0) 486 64 08 80
- Klaas De Grootte: Our new friendly High-End technician...
Mail: Klaas.degrootte@dendermonde.be
Phone: 0032 (0) 471 98 24 65
- Filip Van de Voorde: More into lights, ...and yes, he is the special one...
Mail: Filip.vandevoorde@dendermonde.be
Phone: 0032 (0) 493 24 35 23
- Vanja Van der Hoeven: Grumpy before 10AM and after 10PM
Mail: vanja.vanderhoeven@dendermonde.be
Phone: 0032 (0) 491 99 60 22
- Rental administration: If you are lucky, a friendly lady or... an "AI" answering machine
Mail: info@ccbelgica.be
Phone: +32 52 20 26 26

Note: Nobody likes to work on Mondays....so...most of the time....we don't
But exceptions are possible.
Coffee helps...

!!! If you are into pyrotechnics on this one, please let us know BEFORE the show !!!

If you like to draw digital in a "Capture2020-file" to pre-visualise your show or to make some nice renders....mail us.

If you are more a "colored pencils" minded person...take a look at the next page and go for it.

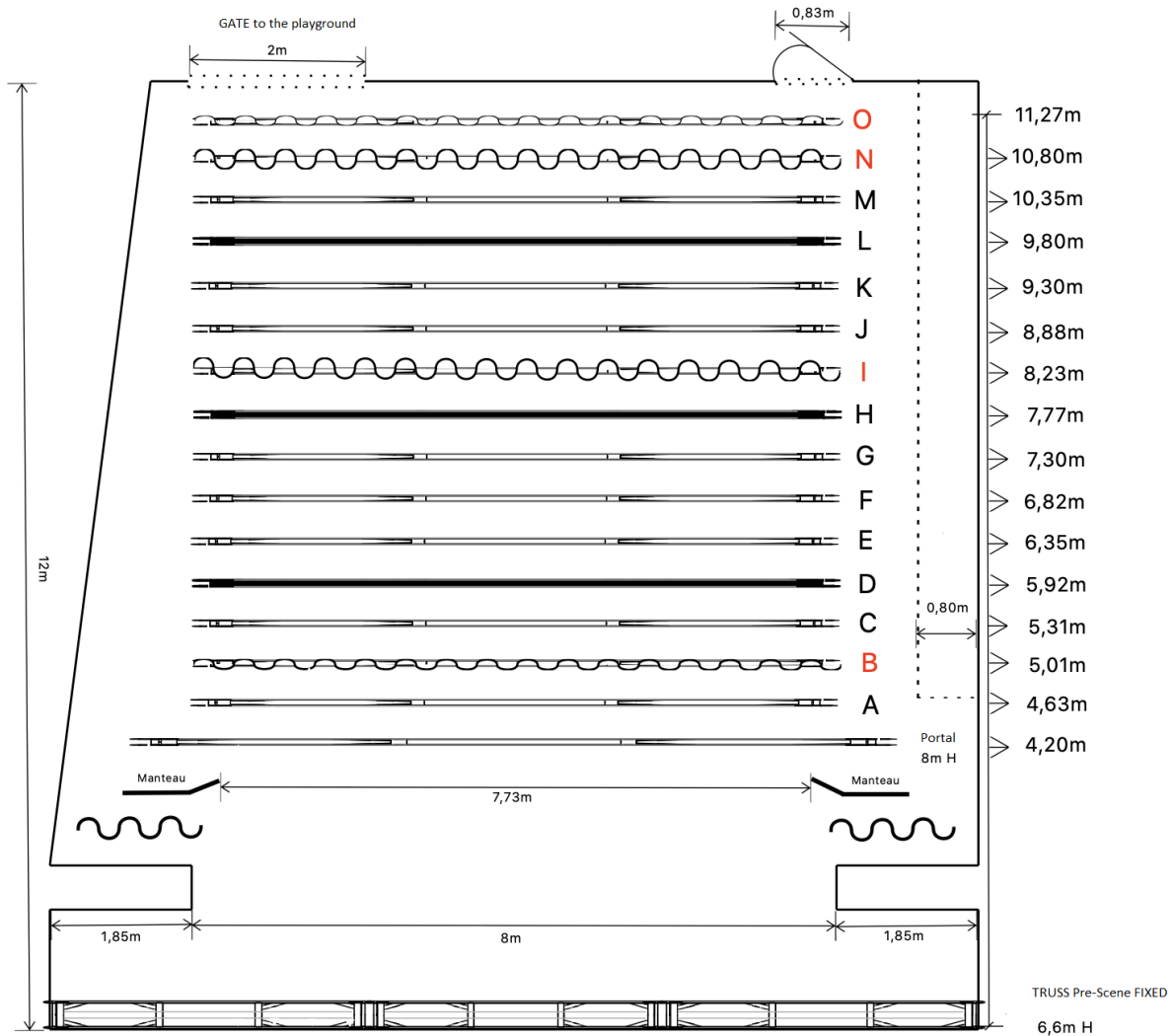
Belgica Theater

technical rider

STAGEPLAN BELGICA THEATER

Production:

Date:



B, I, N, O NOT FOR LIGHT

10 PC's and 4 Profile Zoomspots



Belgica Theater

technical rider

Your notes:

Belgica Theater

technical rider

Capture 2020 renders of the stage:

